

JAZZ BAND SERIES

Belwin™ JAZZ
a division of Alfred

Steampunk

By Erik Morales

INSTRUMENTATION

Conductor
1st E♭ Alto Saxophone
2nd E♭ Alto Saxophone
1st B♭ Tenor Saxophone
2nd B♭ Tenor Saxophone
E♭ Baritone Saxophone
1st B♭ Trumpet
2nd B♭ Trumpet
3rd B♭ Trumpet
4th B♭ Trumpet
1st Trombone
2nd Trombone
3rd Trombone
Bass Trombone
Guitar Chords
Guitar (w/effects)
Piano
Bass
Drums

Optional/Alternate Parts

C Flute
Vibraphone
Tuba (Doubles Bass)
Horn in F (Doubles 1st Trombone)
1st Baritone Horn T.C./B♭ Tenor Saxophone (Doubles 1st Trombone)
2nd Baritone Horn T.C./B♭ Tenor Saxophone (Doubles 2nd Trombone)
3rd Baritone Horn T.C./B♭ Tenor Saxophone (Doubles 3rd Trombone)

NOTES TO THE CONDUCTOR

“Steampunk” is a term that represents a sub-genre of science-fiction that combines modern technology with 19th century innovations, such as steam-powered vehicles and other similar metallic inventions of that era. The main idea for this piece of music was to combine a heavy metal-style rhythm section with traditional jazz ensemble. The electric guitar takes center stage throughout most of the piece. The guitarist should use any “metal-like” overdrive effect available, as the part is meant to be a heavily overdriven guitar sound. The solo section at m. 108 makes use of C and F Phrygian modes. The Phrygian scale begins on the third degree of any major scale. Here are examples both scales for reference:

C Phrygian Scale



F Phrygian Scale



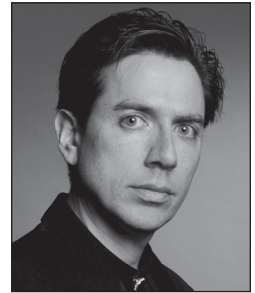
The soloist should use the notes in these scales as the basis for the solo. The solo may be played on piano if no guitarist is available. Optionally, mm. 108–124 (16 bars) may be repeated if additional soloists are desired.

The fall in m. 50 is long. To be effective, I suggest the ensemble practices playing falls so all parts are heard, but with the lead trumpet determining the duration and speed of the fall.

Regarding articulation, the *marcato* or rooftop accent is played detached and accented. Dynamics are always essential and will make this chart come alive. For example, trombones in mm. 67–68 should exaggerate this dynamic indication. Check out the professionally recorded demo at alfred.com/downloads. Listen and learn the nuances of this arrangement.

Enjoy!

—Erik Morales



Erik Morales

Erik Morales began his composing career shortly after graduation from high school in south Florida. He studied composition at Florida International University, and completed his bachelor's degree at the University of Louisiana at Lafayette. Accessible at all levels, the music of Erik Morales has a unique melodic and harmonic vocabulary that appeals to audiences worldwide. His published works encompass a large variety of styles and settings, including works for concert, orchestral, jazz, and chamber ensembles and have been part of featured performances across the globe. Mr. Morales currently teaches and plays trumpet professionally in the New Orleans area, in addition to maintaining an active composing and conducting schedule.

CONDUCTOR
45078S

STEAMPUNK

By Erik Morales

HEAVY METAL JAZZ (STRAIGHT 8THS) ♩ = 138

1st Eb ALTO SAXOPHONE

2ND Eb ALTO SAXOPHONE

1st Bb TENOR SAXOPHONE

2ND Bb TENOR SAXOPHONE

Eb BARITONE SAXOPHONE

1st Bb TRUMPET

2ND Bb TRUMPET

3RD Bb TRUMPET

4TH Bb TRUMPET

1st TROMBONE

2ND TROMBONE

3RD TROMBONE

BASS TROMBONE

SOLO - HEAVILY OVERDRIVEN!
(W/BASS)

GIUITAR (W/EFFECTS)

PIANO

(W/BASS)

BASS

DRUMS

1 2 3 4 5 6 7 8

TOMS

CRASH CYM. H.H. OPEN

Preview Only
Legal Use Requires Purchase

ALTO 1

ALTO 2

TENOR 1

TENOR 2

BARI.

TRP. 1

TRP. 2

TRP. 3

TRP. 4

TBN. 1

TBN. 2

TBN. 3

BASS TBN.

GR.

PNO.

BASS

DRUMS

ALTO 1

ALTO 2

TENOR 1

TENOR 2

BARI.

TPT. 1

TPT. 2

TPT. 3

TPT. 4

TBN. 1

TBN. 2

TBN. 3

BASS TBN.

GRE.

PNO.

BASS

DRUMS

LEAD

CRISO.

mf CRISO.

2

FILL

CONDUCTOR

ALTO 1

ALTO 2

TENOR 1

TENOR 2

BARI.

TPT. 1

TPT. 2

TPT. 3

TPT. 4

TBN. 1

TBN. 2

TBN. 3

BASS TBN.

GTR.

PNO.

BASS

DRUMS

25

26

27

28

29

30

31

34 UNISON SOLI

ALTO 1

ALTO 2

TENOR 1

TENOR 2

BARI.

TPT. 1

TPT. 2

TPT. 3

TPT. 4

TEN. 1

TEN. 2

TEN. 3

BASS TEN.

GRE.

PNO.

BASS

DRUMS

32 33 34 35 36 37 38 39

sim.

Legal Use Only Requires Purchase

42

ALTO 1

ALTO 2

TENOR 1

TENOR 2

BARI.

TRP. 1

TRP. 2

TRP. 3

TRP. 4

TBN. 1

TBN. 2

TBN. 3

BASS TBN.

GRE.

PNO.

BASS

DRUMS

40

41

42

43

44

45

46

47

SIM.

50

ALTO 1

ALTO 2

TENOR 1

TENOR 2

BARI.

TPT. 1

TPT. 2

TPT. 3

TPT. 4

TBN. 1

TBN. 2

TBN. 3

BASS TBN.

GTR.

PNO.

BASS

DRUMS

Legal Use Only

Requires Purchase

RHYTHM

CONDUCTOR

STEAMPUNK

ALTO 1

ALTO 2

TENOR 1

TENOR 2

BARI.

TRP. 1

TRP. 2

TRP. 3

TRP. 4

TBN. 1

TBN. 2

TBN. 3

BASS TBN.

GRF.

PNO.

BASS

DRUMS

RHYTHM

FILL

ALTO 1

ALTO 2

TENOR 1

TENOR 2

BARI.

TPT. 1

TPT. 2

TPT. 3

TPT. 4

TEN. 1

TEN. 2

TEN. 3

BASS TEN.

GRE.

PNO.

BASS

DRUMS

64 65 66 67 68 69 70 71

74

ALTO 1

ALTO 2

TENOR 1

TENOR 2

BARI.

TRP. 1

TRP. 2

TRP. 3

TRP. 4

TBN. 1

TBN. 2

TBN. 3

BASS TBN.

GTR.

PNO.

BASS

DRUMS

72

73

74

75

76

77

78

79

ALTO 1

ALTO 2

TENOR 1

TENOR 2

BARI.

TRP. 1

TRP. 2

TRP. 3

TRP. 4

TBN. 1

TBN. 2

TBN. 3

BASS TBN.

GTR. *C(Nosra)*

PNO.

BASS

DRUMS

80

81

82

83

84

85

86

87

ALTO 1

ALTO 2

TENOR 1

TENOR 2

BARI.

TRP. 1

TRP. 2

TRP. 3

TRP. 4

TBN. 1

TBN. 2

TBN. 3

BASS TBN.

GRE.

PNO.

BASS

DRUMS

108

ALTO 1

ALTO 2

TENOR 1

TENOR 2

BARI.

TRP. 1

TRP. 2

TRP. 3

TRP. 4

TBN. 1

TBN. 2

TBN. 3

BASS TBN.

GR. (Guitar)

PNO. (Piano)

BASS

DRUMS

SOLO (C Phrygian Mode)

COMP (C Phrygian Mode)

SOLO FILL

104 105 106 107 108 109 110 111

Preview Only
 Legal Use Requires Purchase

ALTO 1

ALTO 2

TENOR 1

TENOR 2

BARI.

TRP. 1

TRP. 2

TRP. 3

TRP. 4

TBN. 1

TBN. 2

TBN. 3

BASS TBN.

GTR.

PNO.

BASS

DRUMS

112 113 114 115 116 117 118 119

Legal Use Requires Purchase

PREVIEW ONLY

(F PHRYGIAN MODE)

8va

614.

ALTO 1

ALTO 2

TENOR 1

TENOR 2

BARI.

TRP. 1

TRP. 2

TRP. 3

TRP. 4

TBN. 1

TBN. 2

TBN. 3

BASS TBN.

GTR. (8va) (F Phrygian Mode)

PNO. (F Phrygian Mode)

BASS

DRUMS

128 129 130 131 132 133 134 135

132

Legal Use Requires Purchase



ALTO 1

ALTO 2

TENOR 1

TENOR 2

BAR.

TRP. 1

TRP. 2

TRP. 3

TRP. 4

TBN. 1

TBN. 2

TBN. 3

BASS TBN.

GTR.

PNO.

BASS

DRUMS

136 137 138 139 140 141 142 143 144

ALTO 1

ALTO 2

TENOR 1

TENOR 2

BARI.

TPT. 1

TPT. 2

TPT. 3

TPT. 4

TBN. 1

TBN. 2

TBN. 3

BASS TBN.

GTR.

PNO.

BASS

DRUMS

SOLO

DRUM SOLO

ON CUE

RIFF ON F PHEVIAN

CRAZY SOLO FILLS

145 146 147 148 149 150 151 152 153 154